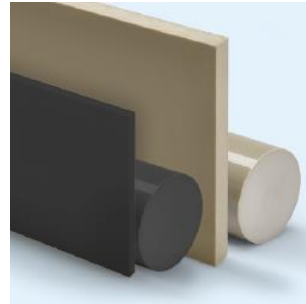
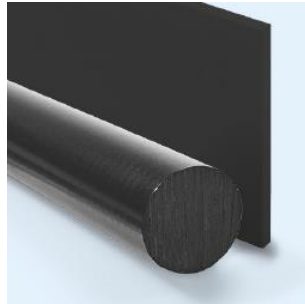
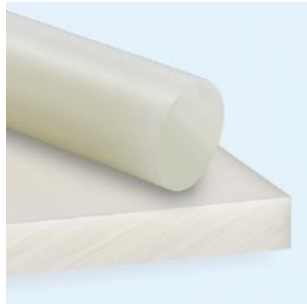




Thermoplastic semi-finished products for medical technology



CONTENT

- » Our Company
- » **MEDI-GEHR®** General Information
- » **MEDI-GEHR®** Products
- » **MEDI-GEHR®** Applications
- » Sterilization / Cleaning
- » **MEDI-GEHR®** Delivery Programme
- » Contact

» FAMILY OWNED AND OPERATED COMPANY WITH TRADITION



» GEHR – AN INTERNATIONAL COMPANY

» US headquarters and production site
Philadelphia, PA, USA



» World headquarters and production site
Mannheim, Germany



» Asia headquarters and warehouse
Hong Kong

QUALITY AND INNOVATION



MARKET SEGMENTS

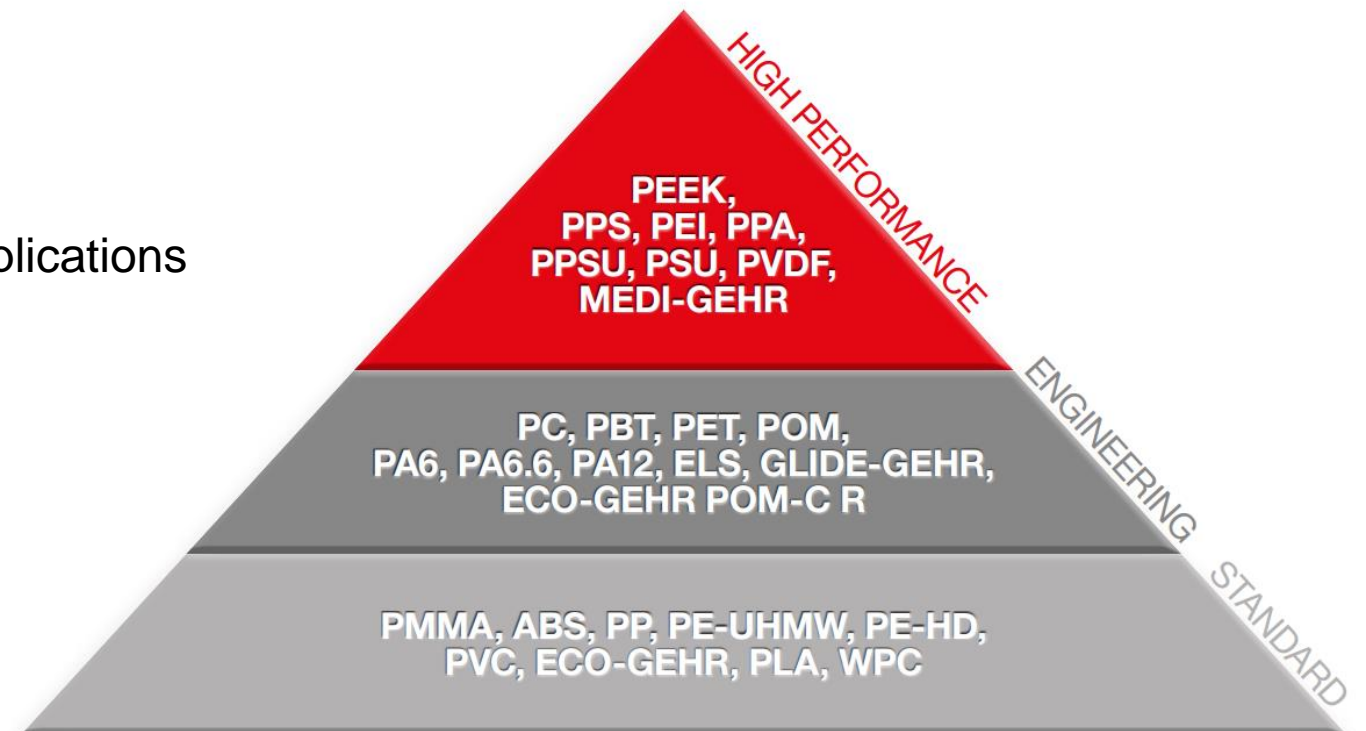
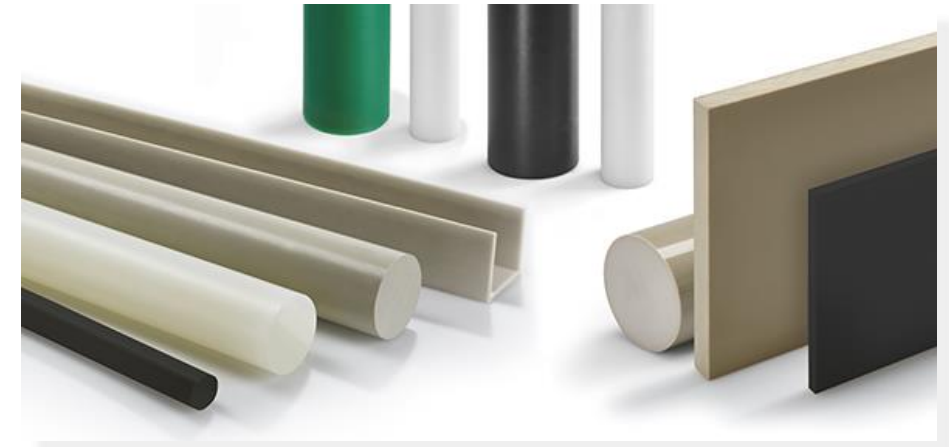


» GEHR EXPERTISE

**EXTRUDED RODS, SHEETS, TUBES,
PROFILES AND FILAMENTS**

SPECIALTIES:

- » Rods up to 700 mm diameter
- » Thick plates up to 300 mm thickness
- » Decorative precision tubes
- » Semi-finished products for medical applications
- » Filaments for professional 3D printing



» ENVIRONMENTAL PROTECTION AND SUSTAINABILITY

SUSTAINABLE PRODUCT RANGE

ECO-GEHR® and FIL-A-GEHR

Greenpoint and Pointball product development: pen made from 79% recycled plastic

CO₂-NEUTRAL PRODUCTION

- Conversion to green electricity and green gas in Mannheim and Philadelphia.
- Achievement of the implementation packages of Katowice Scope1 and Katowice Scope1 and 2

SINCE 2016: 100% RENEWABLE ELECTRICITY

Since 2016, total electricity requirements covered by renewable energies - mainly from hydropower in Norway.



» ENVIRONMENTAL PROTECTION AND SUSTAINABILITY

COOLING PROCESS OPTIMIZED

In order to sustainably conserve water as a resource, we have also made mechanical adjustments to our plants. This has enabled us to significantly reduce the amount of water required in the cooling system as well as the supply of fresh water.

RECYCLING CONCEPT FOR THE AVOIDANCE OF PRODUCTION WASTE

The returned material is sorted, ground, recycled and reused in production wherever possible and permitted.

1.PRIZE: ENVIRONMENTAL AWARD FROM THE CITY OF MANNHEIM 2014

Award for "exemplary performance in corporate environmental protection".



» MOBILITY OF THE FUTURE

In collaboration with TU Munich and Evonik, we are ensuring that the Hyperloop project moves into the next phase. Hyperloop is a new concept for transporting goods and people at almost the speed of sound. The train travels like a maglev train in a low-pressure tube above the earth's surface. In this team, we produced sheets made of VESTAMID® (PA12 filled with glass fibers) for a 24-m-long test track. After extrusion, these sheets are machined before installation to hold the magnetic coils in position for the train.



» GENERAL INFORMATION ABOUT **MEDI-GEHR**®

Products suitable for medical and pharmaceutical applications with direct body contact with tissue, bone, skin and mucosa for up to 24 hours. All raw materials used for the medical grade products are food grade (FDA, EU 10/2011) and have been tested and evaluated by an independent accredited testing laboratory and meet the following biocompatibility requirements:

- » ISO 10993-1: Assessment and testing as part of a risk management system
- » ISO 10993-5: Tests for in vitro cytotoxicity
- » ISO 10993-12: Sample preparation and reference materials
- » ISO 10993-18: Chemical characterization of materials
- » USP Class VI



» GENERAL INFORMATION ABOUT **MEDI-GEHR**®

During production, we ultrasonically inspect our semi-finished products to ensure that they are free of defects and voids. As a manufacturer, we thus fulfill a special duty of care that makes it easier for medical device manufacturers to obtain approval for their end products by reducing costs and time. We also attach great importance to the traceability of the stock goods that leave our production facilities.

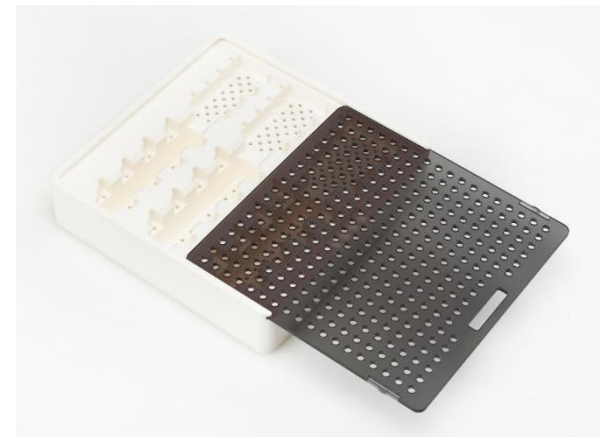


» **MEDI-GEHR PP-HT MG[®]**

- » High heat resistance
- » High stiffness
- » High surface hardness
- » Low density
- » Very high chemical resistance
- » Resistance to hot steam sterilization
- » Brittle at low temperature

APPLICATIONS:

- » Sterilization cassettes and inserts
- » Centrifuge holders
- » Analysis technology





» **MEDI-GEHR PET MG®**

- » Very good chemical resistance
- » Very high impact strength
- » High surface hardness
- » High hydrolysis resistance
- » High creep resistance
- » Good polishability
- » Good sliding friction properties and abrasion resistance
- » Good electrical insulation properties
- » High resistance to gamma radiation

APPLICATIONS:

- » Operating room lights
- » Housings
- » Medical components
- » Disposables for biomedical applications

» **MEDI-GEHR PC MG[®]**

- » Continuous service temperature from -60°C to +120°C
- » Very high stiffness
- » Very high impact strength
- » Very high dimensional stability
- » Resistance to x-ray irradiation
- » Very good heat deflection temperature (approx. 135°C)
- » High surface hardness

APPLICATIONS:

- » Surgical lights
- » Dialysis machines
- » Incubators
- » Oxygen equipment
- » Inhalers

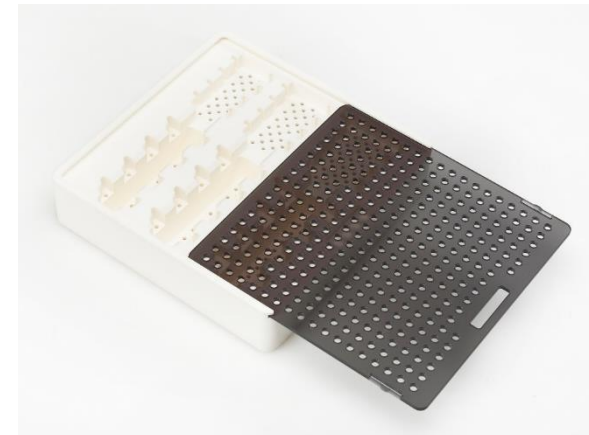


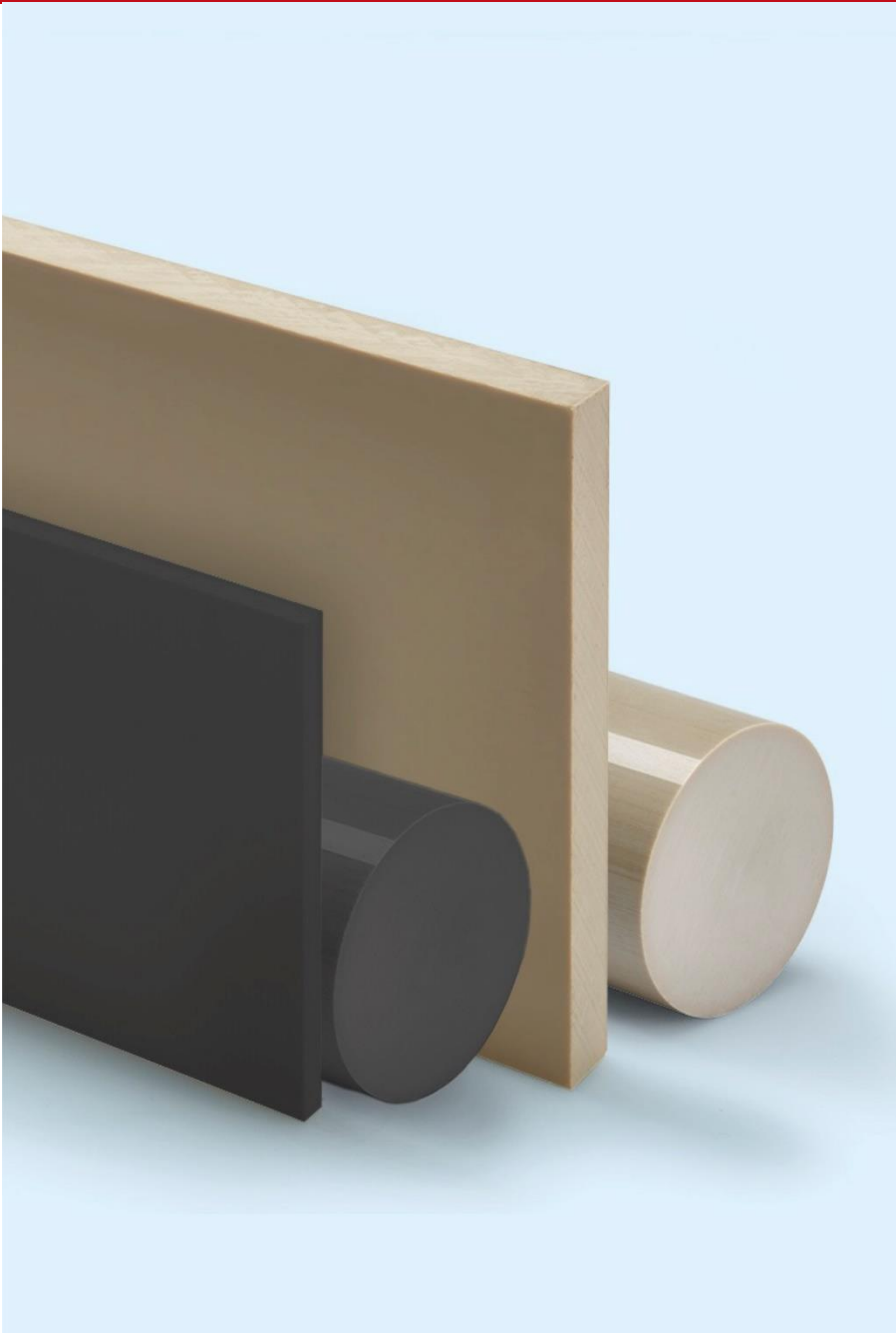
» **MEDI-GEHR PPSU MG®**

- » Continuous service temperature 170°C
- » High strength and stiffness
- » Very high toughness (even at low temperatures)
- » Very high dimensional stability
- » Very high chemical resistance
- » Very good sterilizability
- » Lower chemical resistance than comparable semi-crystalline materials

APPLICATIONS:

- » Instrument handles
- » Instruments for minimally invasive surgery
- » Components in the food industry
- » Pump impellers, pump bodies
- » Valves





» **MEDI-GEHR PEEK MG®**

- » Continuous service temperature -40°C to +260°C
- » Excellent sterilizability with all common methods (superheated steam, gamma, e-beam, EtO)
- » Very high strength, stiffness and toughness
- » Very high temperature and heat resistance
- » Very high creep resistance
- » Very high dimensional stability
- » Very high resistance to β -, γ -, X-ray and infrared radiation
- » High resistance to hydrolysis
- » Good wear properties
- » Low water absorption
- » Inert

» **MEDI-GEHR PEEK MG®**

APPLICATIONS:

- » Dental instruments
- » In-vitro diagnostics
- » Locking devices
- » Connectors
- » Sealing rings, spacers, dosing systems
- » Flanges and sleeves, housing parts
- » Grippers, holders, insulation sleeves,
- » Primary packaging in the pharmaceutical sector





» MEDIFIL-A-GEHR®

MEDI-FIL-A-GEHR products are suitable for medical and pharmaceutical applications with direct body contact with tissue, bone, skin and mucosa for up to 24 hours. All materials meet the same requirements as the semi-finished products. Especially for our certificates and approvals:

FDA*, EU 10/2011*, ISO 10993-1, -5, -12, -18 and USP Class VI

	MEDI-FIL-A-GEHR PEEK MG®	MEDI-FIL-A-GEHR PPSU MG®	MEDI-FIL-A-GEHR PET MG®
	Ø 1,75 mm	Ø 1,75 mm	Ø 2,85 mm Ø 1,75 mm
kg			
0,1	●	●	
0,2	●	●	
0,5	●	●	○ ○
1	●	●	○ ○



natur / natural
transparent



weiß / white
schwarz / black



Auf Lager / Stock item

MEDI-FIL-A-GEHR PEEK MG
Instrument holder prototype





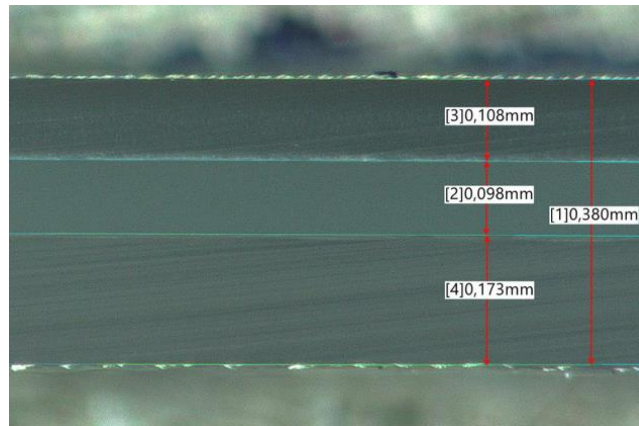
medical filaments



colored PPSU tubes

» GEHR CUSTOMIZING

- » Special manufacture of semi finished products such as tubes, plates, rods, profiles, etc. for industrial and medical applications
- » Tolling of high performance material filaments (also for implants)
- » Extrusion of sheets and rods for medical and electronic segment in clean room
- » Extrusion of multi-layer co-extruded tubes

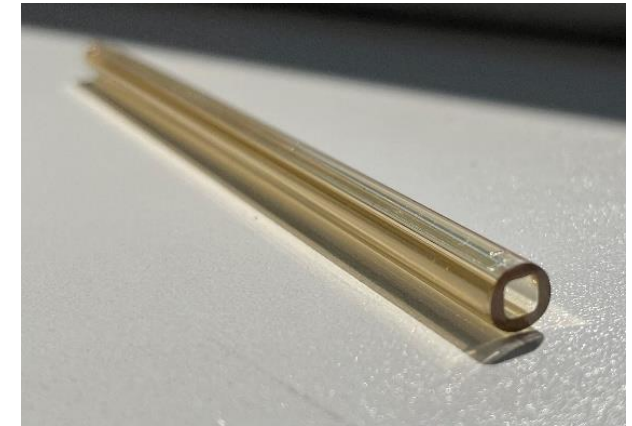


1. layer

2. layer

3. layer

3-layer co-extruded tubes



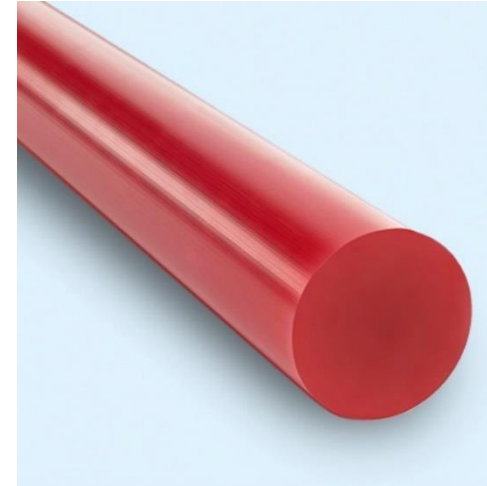
inner square PPSU tube

» **MEDI-GEHR APPLICATIONS**



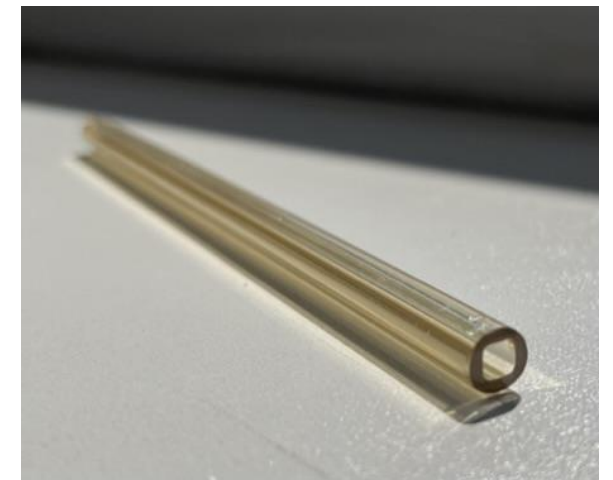
Instrument holder

Sterilization cassettes for
dental applications



Dental applications

PPSU pipes
(inside square)



» STERILIZATION / CLEANING

*Discoloration may occur

+	Compatible
-	Incompatible
o	Not tested


Product	UV irradiation	Gamma irradiation	Autoclave	Ethylene oxide	Hydrogene peroxide
MEDI-GEHR PP-HT MG®	-	-	+	-	-
MEDI-GEHR PET MG®	+	+	-	+	+
MEDI-GEHR PPSU MG®	-	+	+	+	+
MEDI-GEHR PC MG®	+	+	+	+	+
MEDI-GEHR PEEK MG®	-	+	+	+	+
MEDI-FIL-A-GEHR PET MG®	+	+	-	+	+
MEDI-FIL-A-GEHR PPSU MG®	-	+	+	+	+
MEDI-FIL-A-GEHR PEEK MG®	-	+	+	+	+

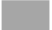




» MEDI-GEHR DELIVERY PROGRAMME



PLATTEN / SHEETS

Länge / Length: 1 | 2 | 3m

 mm	Toleranzen / Tolerances mm		MEDI-GEHR PEEK MG® Breite / Width 620 mm kg/m	MEDI-GEHR PPSU MG® Breite / Width 620 mm kg/m	MEDI-GEHR PP-HT MG® Breite / Width 610 mm kg/m	MEDI-GEHR PC MG® Breite / Width 620 mm kg/m	MEDI-GEHR PET MG® Breite / Width 620 mm kg/m
	min.	max.					
15	+0,3	+1,5			8,743 ○	11,718	11,337
16	+0,3	+1,5	14,340 ○ ●			12,499	12,093
20	+0,3	+1,5	17,730 ○ ●	17,970 ●	11,657 ○	15,624 ○	15,116 ○ ⊕
25	+0,3	+1,5	22,320 ○ ●	22,270 ●		19,530	18,895
30	+0,5	+2,5			17,485 ○	23,436	22,674
35	+0,5	+2,5		31,390 ●		27,342	26,453
40	+0,5	+2,5		35,690 ●	23,314 ○	31,248	30,232
50	+0,5	+2,5		44,290 ●		39,060	37,790

-  Auf Lager / Stock item
-  natur / natural
-  schwarz / black
-  weiß / white
-  transparent



VOLLSTÄBE / ROUND RODS

mm	MEDI-GEHR PEEK MG® Länge / Length 1 2 3 m kg/m	MEDI-GEHR PPSU MG® Länge / Length 1 2 3 m kg/m	MEDI-GEHR PP-HT MG® Länge / Length 1 2 3 m kg/m	MEDI-GEHR PC MG® Länge / Length 1 2 3 m kg/m	MEDI-GEHR PET MG® Länge / Length 1 2 3 m kg/m
5	0,032	0,027			
6	0,040	0,038			
8	0,072	0,068			
10	0,110	0,106			0,097
12	0,164	0,153		0,143	0,140
15	0,252	0,239		0,223	0,219
16	0,285	0,272		0,253	0,249
18	0,360	0,345		0,321	0,315
20	0,439	0,443		0,396	0,389
22	0,535	0,515		0,479	0,471
25	0,685	0,665	0,484	0,619	0,608
28	0,850	0,834		0,776	0,763
30	1,000	0,958		0,891	0,876
32	1,110	1,089		1,013	0,996
36	1,430	1,379		1,283	1,261
40	1,740	1,750	1,230	1,583	1,557
45	2,220	2,154		2,004	1,971
50	2,770	2,730	1,930	2,474	2,433
56	3,400	3,336			3,052
60	3,920	3,940	2,770		3,503
65	4,550	4,950			4,111
70	5,400	5,213			4,768
75	6,100	5,984			5,474
80	6,960	6,970			6,228
90	8,800	8,617			7,882
100	10,800	10,900			9,731
110	13,000				
120	15,610				
125	16,930				
140	21,300				
150	24,600				



FILAMENTE / FILAMENTS

kg	MEDI-GEHR PEEK MG® Ø 1,75 mm	MEDI-GEHR PPSU MG® Ø 1,75 mm	MEDI-GEHR PET MG® Ø 2,85 mm Ø 1,75 mm
0,1	●	●	
0,2	●	●	
0,5	●	●	⊕ ○
1	●	●	⊕ ○

- Auf Lager / Stock item
- natur / natural
- schwarz / black
- weiß / white
- ⊕ transparent

CONTACT



 **Dr. Sebastian Anders**
Business Development Manager

GEHR GmbH

Casterfeldstraße 172, 68219 Mannheim, Germany
Tel.: +49 621 8789 - 0, info@gehr.de, www.gehr.de